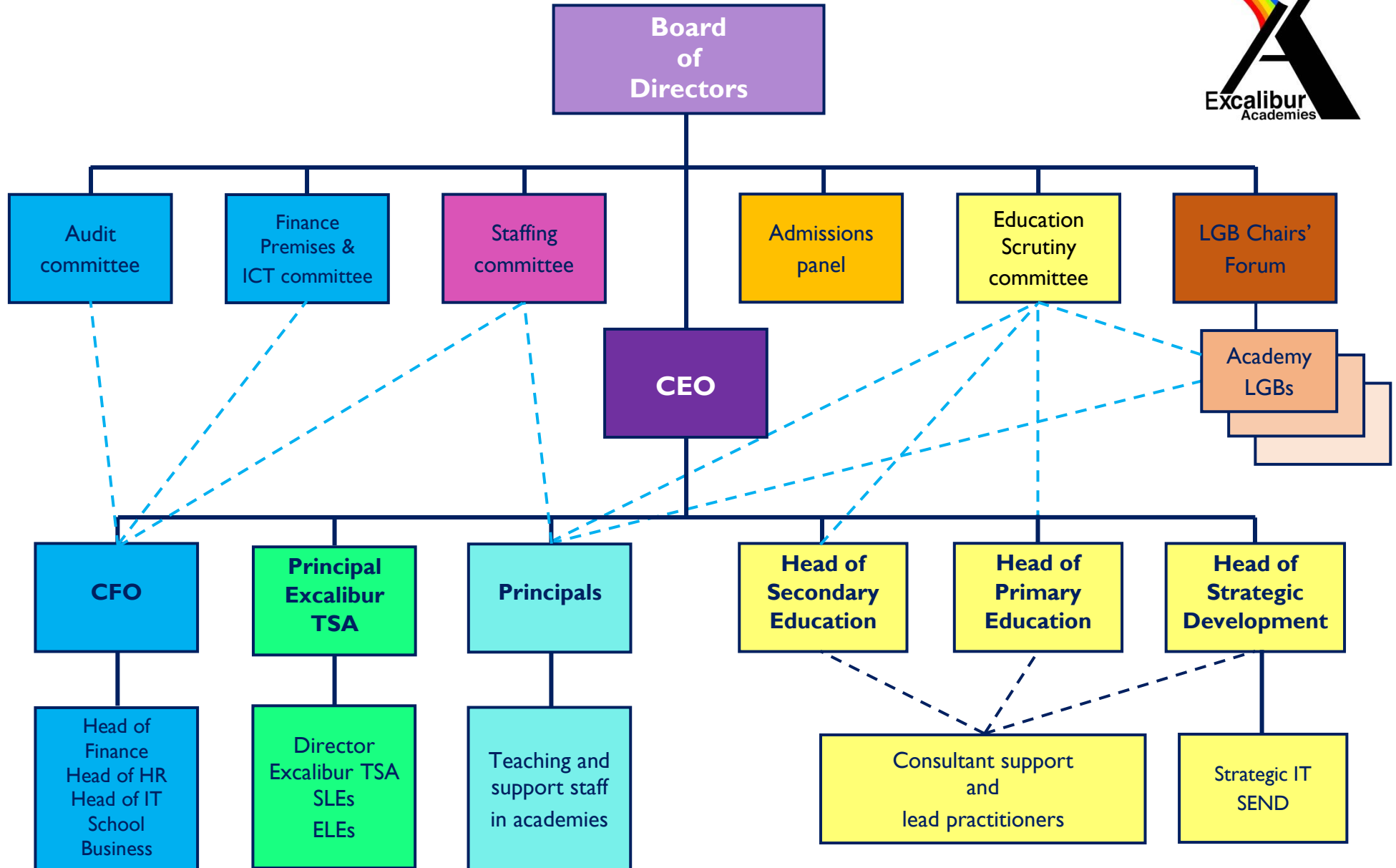


Excalibur Academies Trust – Governance Structure 2020 - 21



Education Scrutiny Committee:-

- reviews the outcomes for each academy at the end of the academic year measured against targets sets and national comparative data;
- agrees the performance measures for the forthcoming academic year;
- holds the Executive to account for setting operational targets and achieving targets within agreed timescales;
- monitors key measures including the quality of leadership and management across the Trust academies and central team performance

Audit Committee:-

- assists directors in ensuring internal financial controls are in place and adhered to
- oversees the risk management process, considering the major risks, establishing and monitoring a risk register, assisting in the preparation of the statement on risk management for the annual report; ensuring risk management strategies are in place
- monitors and reviews health and safety issues on a regular basis, drawing any matters to the attention of the Board
- receives the Annual Report and Financial Statements for recommendation to the Board

Finance, Property & ICT Committee:-

- considers and recommends acceptance/rejection of the Trust's budget
- monitors and reviews the financial health and resources of the Trust to ensure long term viability
- scrutinises and approves significant projects or items of expenditure, ensuring resources deliver value for money
- oversees the commercial activities of the Trust and ensures that appropriate business plans are evolved

Staffing Committee

- reviews and recommend for approval Trust wide HR Policy; in particular, the strategies and policies for recruitment, retention, pay and rewards, training and professional development including apprenticeships
- advises the Board on organisational change, HR compliance and risk management issues
- considers and recommends acceptance/non-acceptance of the Trust's organisational model and associated budget
- approves new posts at leadership level and above

LGB Chairs Forum:-

- supports the LGBs in their focus on the quality of education
- comprised of the chairs of all LGBs the forum works with the CEO to drive improvement of educational standards through collaboration, best practice and support
- Chair of the LGB Chairs Forum is appointed to the Board of Directors